



COMFORTABLE. AFFORDABLE LIVING.

# SUMMIT

LOFT OR SINGLE-LEVEL OPTION AVAILABLE

1 Bed | 1 Bath | 390 SF

WIDTH 15' | LENGTH 26'  
*(measurements are approximate)*

pricing starting at  
**\$67,999**



*Images may show optional upgrades not included in the base model. Please refer to your sales representative.*

LICENSE #605222408

**CALL NOW**

**(360) 301-8322**



[Info@parkmodelnation.com](mailto:Info@parkmodelnation.com)



184 Cowlitz Loop Rd.  
Toledo, WA, 98591.

# SUMMIT

LOFT OR SINGLE-LEVEL OPTION AVAILABLE



**Park Model**  
NATION

COMFORTABLE. AFFORDABLE LIVING.

pricing starting at

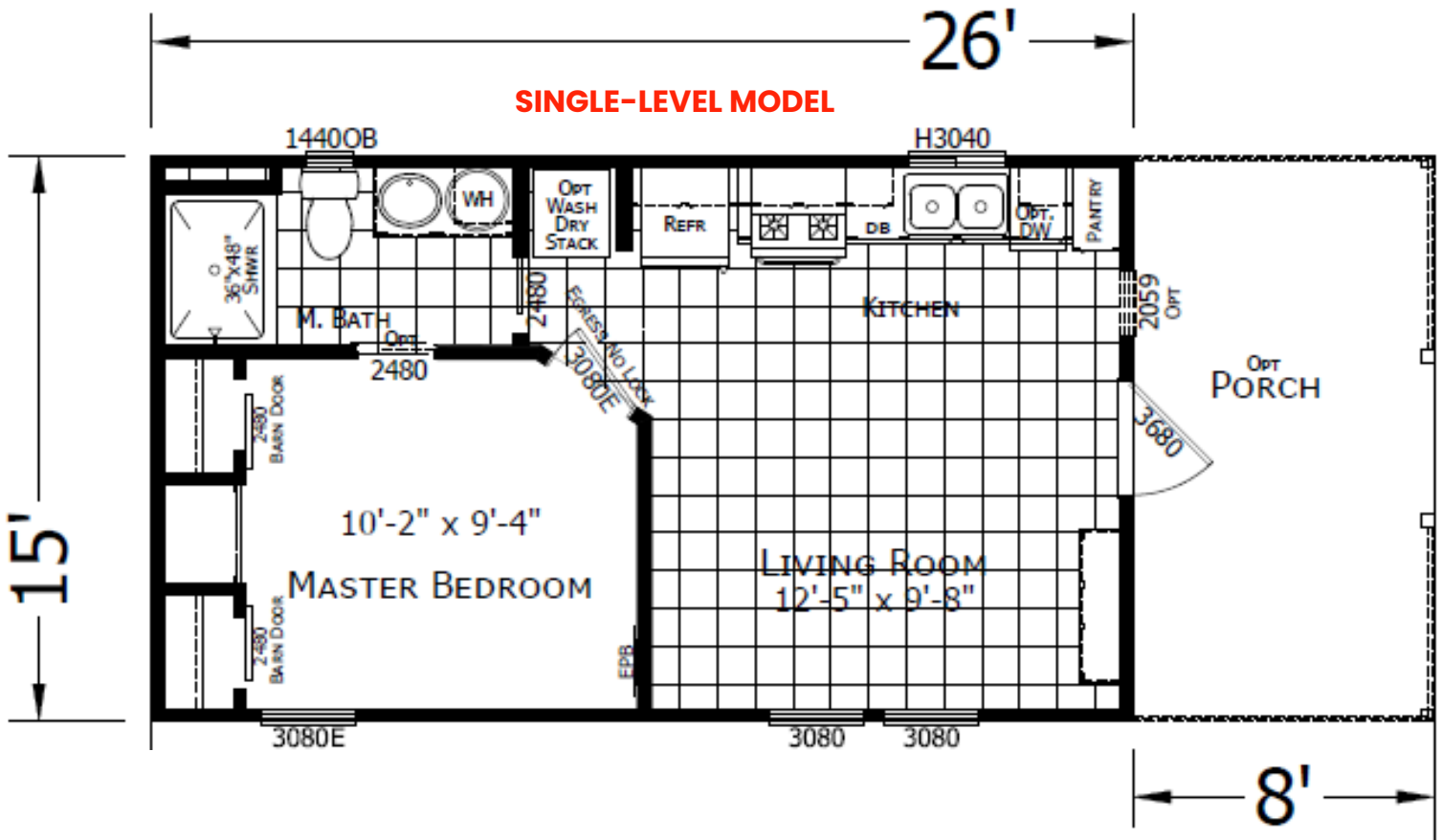
**\$67,999**

1 Bed | 1 Bath | 390 SF

\*All prices are subject to change without prior notice and are not guaranteed, except for those of existing orders. Prices listed do not include sales tax, delivery charges, set-up, skirting or installation.



This Park Model RV is built in accordance with ANSI A119.5 standards and is approved by the Washington State Department of Labor & Industries (L&I).



Due to continuous product development and improvement, prices, specifications and materials are subject to change without notice or obligation. Square footage and other dimensions are approximate. Images such as rendering, photos and floor plans may be shown with optional features and/or third party additions that may not be available in all regions.

LICENSE #605222408

**CALL NOW**

**(360) 301-8322**



[Info@parkmodelnation.com](mailto:Info@parkmodelnation.com)



184 Cowlitz Loop Rd.  
Toledo, WA, 98591.

# SUMMIT

LOFT OR SINGLE-LEVEL OPTION AVAILABLE

pricing starting at

# \$67,999

1 Bed | 1 Bath | 390 SF

This Park Model RV is built in accordance with ANSI A119.5 standards for Park Model Recreational Vehicles and is approved by the Washington State Department of Labor & Industries (L&I).

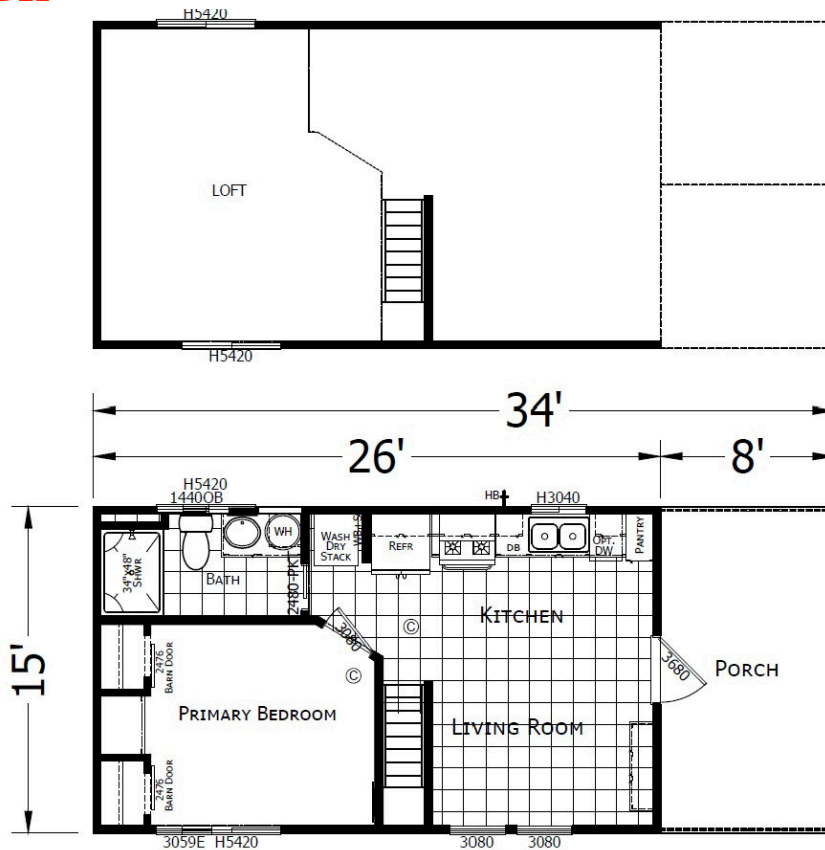


## Park Model NATION

COMFORTABLE. AFFORDABLE LIVING.

\*All prices are subject to change without prior notice and are not guaranteed, except for those of existing orders. Prices listed do not include sales tax, delivery charges, set-up, skirting or installation.

### LOFTED MODEL



Due to continuous product development and improvement, prices, specifications and materials are subject to change without notice or obligation. Square footage and other dimensions are approximate. Images such as rendering, photos and floor plans may be shown with optional features and/or third party additions that may not be available in all regions.

LICENSE #605222408

## CALL NOW

# (360) 301-8322



[Info@parkmodelnation.com](mailto:Info@parkmodelnation.com)



184 Cowlitz Loop Rd.  
Toledo, WA, 98591.

# SUMMIT

LOFT OR SINGLE-LEVEL OPTION AVAILABLE

pricing starting at

# \$67,999

1 Bed | 1 Bath | 390 SF



## Park Model NATION

COMFORTABLE. AFFORDABLE LIVING.

\*All prices are subject to change without prior notice and are not guaranteed, except for those of existing orders. Prices listed do not include sales tax, delivery charges, set-up, skirting or installation.

## SINGLE LEVEL - ROOF DESIGN CHOICES

STANDARD



HITCH END  
STANDARD PEAK  
102" FLAT CEILING

SHED ROOF



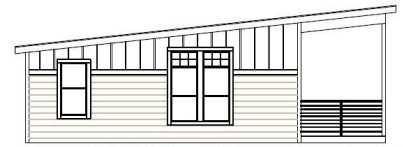
HITCH END  
SHED ROOF  
SLOPED CEILING SIDE TO SIDE

RAISED ROOF



HITCH END  
LOFT ROOF  
132" CEILING, SLIGHT VAULT  
\*\*METAL ROOF REQUIRED

MONO-SLOPE

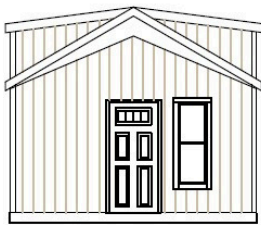


LEFT SIDE ELEVATION  
MONO-SLOPE ROOF  
SLOPED CEILING, LOW REAR TO HIGH FRONT (HITCH)  
HITCH END

\*\*METAL ROOF REQUIRED

## LOFTED MODEL - ROOF DESIGN CHOICES

SPLIT-PITCH



HITCH END  
LOFT ROOF  
132" CEILING  
HIGH PITCH OVER PORCH  
\*\*METAL ROOF REQUIRED

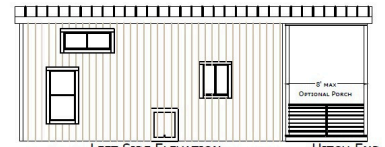


LEFT SIDE ELEVATION  
HITCH END

RAISED ROOF



HITCH END  
LOFT ROOF  
132" CEILING, SLIGHT VAULT  
\*\*METAL ROOF REQUIRED



LEFT SIDE ELEVATION  
HITCH END

Due to continuous product development and improvement, prices, specifications and materials are subject to change without notice or obligation. or obligation. Square footage and other dimensions are approximate. Images such as rendering, photos and floor plans may be shown with optional features and/or third party additions that may not be available in all regions.

LICENSE #605222408

# CALL NOW

# (360) 301-8322



Info@parkmodelnation.com



184 Cowlitz Loop Rd.  
Toledo, WA, 98591.

## SUMMIT, STANDARD FEATURES

Updated 10/30/2023

### Construction

- CODE: Ansi 119.5
- FLOOR JOISTS: 2x8, 16" oc (15' Wide Models)
- SIDEWALLS: 8'6" Sidewalls
- FLOOR DECKING: 19/32" T&G OSB Decking
- EXTERIOR WALLS: 2x4, 16" oc
- ROOF LOAD: 30#
- ROOF PITCH: PM5:12

### Exterior

- ROOF: Architectural Shingles
- SIDING: LP Vertical Panel
- FRONT DOOR: 36" 9Lite-Outswing

### Thermal / Insulation Upgrades

- WALL/FLOOR/ROOF INSULATION: R-11,R-11,R-22

### Floor Covering

- CARPET-BEDROOM-25 OUNCE
- CARPET PAD- 7/16" 8# Rebond Pad
- LINOLEUM-Living Room/Dining Room/Bath

### Bath

- SINKS- China
- FAUCETS- Single Lever Satin Nickel
- VANITIES- 36" Height
- COUNTERTOPS: Laminate
- BACKSPLASH: 4" Ceramic Tile. One-row tile accent only (not full wall coverage).
- TOILET: Elongated
- TOWEL BAR & PAPER HOLDER: Satin Nickel
- BATH MIRROR: Medicine Cabinet
- TUB/SHOWER: 48" Fiberglass w/ Door

### Kitchen

- SINK: Double-basin sink with sprayer. Stainless Steel
- FAUCET: Single Lever w/ Sprayer
- COUNTERTOPS: Laminate Top & Edge
- BACKSPLASH: 4" Ceramic Tile. One-row tile accent only (not full wall coverage).
- RANGE: 30" GAS Deluxe. White or black only
- REFRIGERATOR: 16 cf. White or black only.
- RANGEHOOD: 30" Hood
- CABINETS: 42" Overheads w/ Double Adj. Shelves
- DRAWERS: Drawer Over Door w/ Metal Guides
- CABINETS: Cabinet Over Refer & Pantry Cabinet

### Electrical / Mechanical

- AMP: 50 AMP Elec Service w/ Pigtail
- HEAT: Wall Heaters
- WATER HEATER: 20 Gal ELEC
- SHUTOFF VALVES: Individual Shutoff Valves Throughout
- DETECTORS: CO/Explosive Gas Detector

### Interior

- COVE MOLDING: 4046 Throughout
- BASE MOLDING: 356 Throughout
- WALLS & CLOSETS: Tape & Texture Throughout
- CEILING: Skip Troweled Ceiling Texture
- CABINETS: Hardwood
- SHELVING: 12" Wire
- DOORS: White 2 Panel
- ENTERTAINMENT CENTER: Per Print
- SAFETY: Fire Extinguisher
- INTERIOR PAINT: EGGSHELL White
- MINI BLINDS: 2" Fauxwood
- WINDOW: Dual Glazed, Vinyl

*Due to continuous product development and improvement, prices, specifications and materials are subject to change without notice or obligation. Square footage and other dimensions are approximate. Images such as rendering, photos and floor plans may be shown with optional features and/or third party additions that may not be available in all regions.*

LICENSE #605222408

**CALL NOW**

**(360) 301-8322**



**Info@parkmodelnation.com**



**184 Cowlitz Loop Rd.  
Toledo, WA, 98591.**